



TEST REPORT

REPORT No.: **DTIBW20200397-1R**

Date: 2020-05-28

Page 1 of 33

Applicant Company Name: Shenzhen Huafurui Technology Co., Ltd.

Applicant Company Address: Unit 1401 &1402, 14/F, Jinqi zhigu mansion (No. 4 building of Chongwen Garden), Crossing of the Liuxian street and Tangling road, Taoyuan street, Nanshan district, Shenzhen,P.R. China

The following sample(s) was/were submitted and identified on behalf of the client as:

Sample Name : Smart phone
 Model No. : CUBOT P40
 Sample Receiving Date : May 20, 2020
 Testing Period : From May 20, 2020 to May 28, 2020
 Results : Please refer to next page(s).

Summary of Test Results:

TEST REQUEST

A EU RoHS Directive 2011/65/EU and its amendment directives 2015/863/EU (**RoHS 2.0**)

CONCLUSION

Pass

Signed for and on behalf of
DTI

Approved by: Tommy Jiang
lab manager



This document is issued by the Company subject to its General Conditions of service of service printed overleaf, available on request for electronic format documents, subject to terms and conditions for electronic documents is drawn to the limitation of liability indemnification and jurisdiction issues defined therein. any holder of this document is advised that information contained hereon reflects the company's findings at the time of its intervention only and within the limits of client's instructions, if any, the company's sole responsibility is to its client and this document does not exonerate parties to a transaction from exercising all their rights and obligations under the transaction documents, this document cannot be reproduced except in full, without prior written approval of the company. any unauthorized alteration, forgery or falsification of the content or appearance of this document is unlawful and offenders may be prosecuted to the fullest extent of the law unless otherwise stated the results shown in this test report refer only to the sample(s) tested.





TEST REPORT

REPORT No.: **DTIBW20200397-1R**

Date: 2020-05-28

Page 2 of 33

Results:

1、EU RoHS Directive 2011/65/EU and its amendment directives on XRF

Test method: With reference to IEC 62321-3-1:2013, Screening by X-ray Fluorescence Spectroscopy (XRF)

Seq. No.	Tested Part(s)	Results				
		Pb	Cd	Hg	Cr	Br
1	Blackish Green Coating	BL	BL	BL	BL	BL
2	Black Plastic Frame	BL	BL	BL	BL	BL
3	FPC	BL	BL	BL	BL	BL
4	Copper Foil	BL	BL	BL	BL	BL
5	Black Plastic Frame	BL	BL	BL	BL	BL
6	Silver Metal Pedestal	BL	BL	BL	BL	BL
7	Gold Metal Nut	X	BL	BL	BL	BL
8	Yellow Plastic Sticker	BL	BL	BL	BL	BL
9	Black Plastic Sticker	BL	BL	BL	BL	BL
10	Gray Coating	BL	BL	BL	BL	BL
11	Black Coating	BL	BL	BL	BL	BL
12	Plastic Cover Substrate	BL	BL	BL	BL	BL
13	Black Electroplating	BL	BL	BL	BL	BL
14	Metal Case Substrate	BL	BL	BL	BL	BL
15	Camera Glass Cover	BL	BL	BL	BL	BL
16	White Translucent Plastic Shell (Flash Lamp)	BL	BL	BL	BL	BL
17	Black Plastic Cover	BL	BL	BL	BL	BL
18	FPC	BL	BL	BL	BL	BL
19	Copper Foil	BL	BL	BL	BL	BL
20	FPC	BL	BL	BL	BL	BL



This document is issued by the Company subject to its General Conditions of service of service printed overleaf, available on request for electronic format documents, subject to terms and conditions for electronic documents is drawn to the limitation of liability indemnification and jurisdiction issues defined therein. any holder of this document is advised that information contained hereon reflects the company's findings at the time of its intervention only and within the limits of client's instructions, if any, the company's sole responsibility is to its client and this document does not exonerate parties to a transaction from exercising all their rights and obligations under the transaction documents, this document cannot be reproduced except in full, without prior written approval of the company. any unauthorized alteration, forgery or falsification of the content or appearance of this document is unlawful and offenders may be prosecuted to the fullest extent of the law. unless otherwise stated the results shown in this test report refer only to the sample(s) tested.



Shenzhen Deesev Testing International Corp.
深圳市德泽威技术检测有限公司

9th Flr., Building B, Feiyang Science & Technology Park, Longchang Rd. No.8, Bao'an, Shenzhen, Guangdong, China
中国广东省深圳市宝安区隆昌路8号飞扬科技园B座9楼
Tel: +86-0755-32936716, E-mail: DTI@deesev.cn



TEST REPORT

REPORT No.: **DTIBW20200397-1R**

Date: 2020-05-28

Page 3 of 33

Seq. No.	Tested Part(s)	Results				
		Pb	Cd	Hg	Cr	Br
21	LED	BL	BL	BL	BL	BL
22	Touch Screen Glass	BL	BL	BL	BL	BL
23	Display Screen Glass	BL	BL	BL	BL	BL
24	Silver Plastic Patch	BL	BL	BL	BL	BL
25	White Plastic Patch	BL	BL	BL	BL	BL
26	Transparent Plastic Sheet	BL	BL	BL	BL	BL
27	White Plastic Sheet	BL	BL	BL	BL	BL
28	Silver Plastic Sheet	BL	BL	BL	BL	BL
29	Black Plastic Stickers	BL	BL	BL	BL	BL
30	White Plastic Frame	BL	BL	BL	BL	BL
31	Silver Metal Case	BL	BL	BL	BL	BL
32	PCB	BL	BL	BL	BL	X
33	Solder Point	X	BL	BL	BL	BL
34	Silver Metal Socket	BL	BL	BL	BL	BL
35	Gold Metal Socket	BL	BL	BL	BL	BL
36	Silver Metal Cover	BL	BL	BL	BL	BL
37	Terminal Black Plastic	BL	BL	BL	BL	BL
38	Terminal Silver Needles	BL	BL	BL	BL	BL
39	Patch Coil Inductor	BL	BL	BL	BL	BL
40	Copper Winding	BL	BL	BL	BL	BL



This document is issued by the Company subject to its General Conditions of service of service printed overleaf, available on request for electronic format documents, subject to terms and conditions for electronic documents is drawn to the limitation of liability indemnification and jurisdiction issues defined therein. any holder of this document is advised that information contained hereon reflects the company's findings at the time of its intervention only and within the limits of client's instructions, if any, the company's sole responsibility is to its client and this document does not exonerate parties to a transaction from exercising all their rights and obligations under the transaction documents, this document cannot be reproduced except in full, without prior written approval of the company. any unauthorized alteration, forgery or falsification of the content or appearance of this document is unlawful and offenders may be prosecuted to the fullest extent of the law unless otherwise stated the results shown in this test report refer only to the sample(s) tested.



Shenzhen Deesev Testing International Corp.
 深圳市德泽威技术检测有限公司

9th Flr., Building B, Feiyang Science & Technology Park, Longchang Rd. No.8, Bao'an, Shenzhen, Guangdong, China
 中国广东省深圳市宝安区隆昌路8号飞扬科技园B座9楼
 Tel: +86-0755-32936716, E-mail: DTI@deesev.cn



TEST REPORT

REPORT No.: **DTIBW20200397-1R**

Date: 2020-05-28

Page 4 of 33

Seq. No.	Tested Part(s)	Results				
		Pb	Cd	Hg	Cr	Br
41	Black Plastic Plug-Base	BL	BL	BL	BL	BL
42	Gold Metal Terminal	BL	BL	BL	BL	BL
43	Silver Metal Terminal	BL	BL	BL	BL	BL
44	Black Plastic Cover	BL	BL	BL	BL	BL
45	Beige Plastic Plug-Base	BL	BL	BL	BL	BL
46	Silver Metal Terminal	BL	BL	BL	BL	BL
47	Black Ceramic Body Chip	BL	BL	BL	BL	BL
48	Patch Resistor	BL	BL	BL	BL	BL
49	Multilayer Ceramic Chip Capacitors	BL	BL	BL	BL	BL
50	SMD Components	BL	BL	BL	BL	BL
51	Patch Diode	BL	BL	BL	BL	BL
52	Patch LED	BL	BL	BL	BL	BL
53	Black Plastic Case (Earphone Jack)	BL	BL	BL	BL	BL
54	Gold Metal Pin	BL	BL	BL	BL	BL
55	Silver Metal Case (Card Slot)	BL	BL	BL	BL	BL
56	Black Plastic (Card Slot)	BL	BL	BL	BL	BL
57	Gold Metal Needles (Card Slot)	BL	BL	BL	BL	BL
58	Black Ceramic Body Chip	BL	BL	BL	BL	BL
59	Patch Resistor	BL	BL	BL	BL	BL
60	Multilayer Ceramic Chip Capacitors	BL	BL	BL	BL	BL



This document is issued by the Company subject to its General Conditions of service of service printed overleaf, available on request for electronic format documents, subject to terms and conditions for electronic documents is drawn to the limitation of liability indemnification and jurisdiction issues defined therein. any holder of this document is advised that information contained hereon reflects the company's findings at the time of its intervention only and within the limits of client's instructions, if any, the company's sole responsibility is to its client and this document does not exonerate parties to a transaction from exercising all their rights and obligations under the transaction documents, this document cannot be reproduced except in full, without prior written approval of the company. any unauthorized alteration, forgery or falsification of the content or appearance of this document is unlawful and offenders may be prosecuted to the fullest extent of the law unless otherwise stated the results shown in this test report refer only to the sample(s) tested.



Shenzhen Deesev Testing International Corp.
 深圳市德泽威技术检测有限公司

9th Flr., Building B, Feiyang Science & Technology Park, Longchang Rd. No.8, Bao'an, Shenzhen, Guangdong, China
 中国广东省深圳市宝安区隆昌路8号飞扬科技园B座9楼
 Tel: +86-0755-32936716, E-mail: DTI@deesev.cn



TEST REPORT

REPORT No.: **DTIBW20200397-1R**

Date: 2020-05-28

Page 5 of 33

Seq. No.	Tested Part(s)	Results				
		Pb	Cd	Hg	Cr	Br
61	Patch Diode	BL	BL	BL	BL	BL
62	Crystal Oscillator	BL	BL	BL	BL	BL
63	SMD Components	BL	BL	BL	BL	BL
64	Patch LED	BL	BL	BL	BL	BL
65	Patch Coil Inductor	BL	BL	BL	BL	BL
66	Copper Winding	BL	BL	BL	BL	BL
67	Black Plastic Cover	BL	BL	BL	BL	BL
68	Beige Plastic Plug-Base	BL	BL	BL	BL	BL
69	Silver Metal Terminal	BL	BL	BL	BL	BL
70	Black Plastic Plug-Base	BL	BL	BL	BL	BL
71	Gold Metal Terminal	BL	BL	BL	BL	BL
72	Silver Metal Terminal	BL	BL	BL	BL	BL
73	PCB	BL	BL	BL	BL	X
74	Solder Point	BL	BL	BL	BL	BL
75	Black Plastic Plug-Base	BL	BL	BL	BL	BL
76	Gold Metal Terminal	BL	BL	BL	BL	BL
77	PCB	BL	BL	BL	BL	X
78	Solder Point	BL	BL	BL	BL	BL
79	Yellow Plastic Sticker	BL	BL	BL	BL	BL
80	Black Ceramic Body Chip	BL	BL	BL	BL	BL



This document is issued by the Company subject to its General Conditions of service of service printed overleaf, available on request for electronic format documents, subject to terms and conditions for electronic documents is drawn to the limitation of liability indemnification and jurisdiction issues defined therein. any holder of this document is advised that information contained hereon reflects the company's findings at the time of its intervention only and within the limits of client's instructions, if any, the company's sole responsibility is to its client and this document does not exonerate parties to a transaction from exercising all their rights and obligations under the transaction documents, this document cannot be reproduced except in full, without prior written approval of the company. any unauthorized alteration, forgery or falsification of the content or appearance of this document is unlawful and offenders may be prosecuted to the fullest extent of the law unless otherwise stated the results shown in this test report refer only to the sample(s) tested.



Shenzhen Deesev Testing International Corp.
 深圳市德泽威技术检测有限公司

9th Flr., Building B, Feiyang Science & Technology Park, Longchang Rd. No.8, Bao'an, Shenzhen, Guangdong, China
 中国广东省深圳市宝安区隆昌路8号飞扬科技园B座9楼
 Tel: +86-0755-32936716, E-mail: DTI@deesev.cn



TEST REPORT

REPORT No.: **DTIBW20200397-1R**

Date: 2020-05-28

Page 6 of 33

Seq. No.	Tested Part(s)	Results				
		Pb	Cd	Hg	Cr	Br
81	Patch Resistor	BL	BL	BL	BL	BL
82	Patch Diode	BL	BL	BL	BL	BL
83	Silver Metal Components	BL	BL	BL	BL	BL
84	Silver Metal Terminal	BL	BL	BL	BL	BL
85	Gold Metal Socket	BL	BL	BL	BL	BL
86	Black Ceramic Body Chip	BL	BL	BL	BL	BL
87	Patch Resistor	BL	BL	BL	BL	BL
88	Patch Diode	BL	BL	BL	BL	BL
89	SMD Components	BL	BL	BL	BL	BL
90	Black Plastic Plug-Base	BL	BL	BL	BL	BL
91	Gold Metal Terminal	BL	BL	BL	BL	BL
92	Silver Metal Case	BL	BL	BL	BL	BL
93	Internal Black Plastic	BL	BL	BL	BL	BL
94	Gold Metal Needles	BL	BL	BL	BL	BL
95	FPC	BL	BL	BL	BL	BL
96	Silver Metal Sheet	BL	BL	BL	BL	BL
97	Black Ceramic Body Chip	BL	BL	BL	BL	BL
98	Patch Resistor	BL	BL	BL	BL	BL
99	Multiplayer Ceramic Chip Capacitors	BL	BL	BL	BL	BL
100	Patch Diode	BL	BL	BL	BL	BL



This document is issued by the Company subject to its General Conditions of service of service printed overleaf, available on request for electronic format documents, subject to terms and conditions for electronic documents is drawn to the limitation of liability indemnification and jurisdiction issues defined therein. any holder of this document is advised that information contained hereon reflects the company's findings at the time of its intervention only and within the limits of client's instructions, if any, the company's sole responsibility is to its client and this document does not exonerate parties to a transaction from exercising all their rights and obligations under the transaction documents, this document cannot be reproduced except in full, without prior written approval of the company. any unauthorized alteration, forgery or falsification of the content or appearance of this document is unlawful and offenders may be prosecuted to the fullest extent of the law unless otherwise stated the results shown in this test report refer only to the sample(s) tested.



Shenzhen Deesev Testing International Corp.
 深圳市德泽威技术检测有限公司

9th Flr., Building B, Feiyang Science & Technology Park, Longchang Rd. No.8, Bao'an, Shenzhen, Guangdong, China
 中国广东省深圳市宝安区隆昌路8号飞扬科技园B座9楼
 Tel: +86-0755-32936716, E-mail: DTI@deesev.cn



TEST REPORT

REPORT No.: **DTIBW20200397-1R**

Date: 2020-05-28

Page 7 of 33

Seq. No.	Tested Part(s)	Results				
		Pb	Cd	Hg	Cr	Br
101	Yellow Plastic Sticker	BL	BL	BL	BL	BL
102	Black Plastic Plug-In	BL	BL	BL	BL	BL
103	Gold Metal Terminal	BL	BL	BL	BL	BL
104	FPC	BL	BL	BL	BL	BL
105	Silver Metal Sheet	BL	BL	BL	BL	BL
106	Silver Metal Case	BL	BL	BL	BL	BL
107	Black Camera Components	BL	BL	BL	BL	BL
108	Black Plastic Plug-In	BL	BL	BL	BL	BL
109	Gold Metal Terminal	BL	BL	BL	BL	BL
110	White Horn Paper (Horn)	BL	BL	BL	BL	BL
111	Silver Horn Paper (Horn)	BL	BL	BL	BL	BL
112	Black Plastic Frame (Horn)	BL	BL	BL	BL	BL
113	Silver Metal Cover (Horn)	BL	BL	BL	BL	BL
114	Transparent Plastic (Horn)	BL	BL	BL	BL	BL
115	Copper Wire (Horn)	BL	BL	BL	BL	BL
116	Silver Magnet (Horn)	BL	BL	BL	BL	BL
117	Silver Metal Pedestal (Horn)	BL	BL	BL	BL	BL
118	Silver Metal Pin (Horn)	BL	BL	BL	BL	BL
119	Silver Metal Microphone Components	BL	BL	BL	BL	BL
120	Blue Plastic Wire Outer Skin	BL	BL	BL	BL	BL



This document is issued by the Company subject to its General Conditions of service of service printed overleaf, available on request for electronic format documents, subject to terms and conditions for electronic documents is drawn to the limitation of liability indemnification and jurisdiction issues defined therein. any holder of this document is advised that information contained hereon reflects the company's findings at the time of its intervention only and within the limits of client's instructions, if any, the company's sole responsibility is to its client and this document does not exonerate parties to a transaction from exercising all their rights and obligations under the transaction documents, this document cannot be reproduced except in full, without prior written approval of the company. any unauthorized alteration, forgery or falsification of the content or appearance of this document is unlawful and offenders may be prosecuted to the fullest extent of the law unless otherwise stated the results shown in this test report refer only to the sample(s) tested.



Shenzhen Deesev Testing International Corp.
 深圳市德泽威技术检测有限公司

9th Flr., Building B, Feiyang Science & Technology Park, Longchang Rd. No.8, Bao'an, Shenzhen, Guangdong, China
 中国广东省深圳市宝安区隆昌路8号飞扬科技园B座9楼
 Tel: +86-0755-32936716, E-mail: DTI@deesev.cn



TEST REPORT

REPORT No.: **DTIBW20200397-1R**

Date: 2020-05-28

Page 8 of 33

Seq. No.	Tested Part(s)	Results				
		Pb	Cd	Hg	Cr	Br
121	Red Plastic Wire Outer Skin	BL	BL	BL	BL	BL
122	Wire Internal Metal Wire	BL	BL	BL	BL	BL
123	FPC	BL	BL	BL	BL	BL
124	Silver Metal Sheet	BL	BL	BL	BL	BL
125	Black Plastic Stickers	BL	BL	BL	BL	BL
126	Silver Metal Sheet	BL	BL	BL	BL	BL
127	Silver Metal Case (Chip Cover)	BL	BL	BL	BL	BL
128	Black Stickers	BL	BL	BL	BL	BL
129	Gray Sponge Viscose	BL	BL	BL	BL	BL
130	Black Rubber Cover	BL	BL	BL	BL	BL
131	Silver Metal Screws	BL	BL	BL	BL	BL
132	Blackish Green Coating	BL	BL	BL	BL	BL
133	Plastic Button Substrate	BL	BL	BL	BL	BL
134	Black Plastic Wire Outer Skin	BL	BL	BL	BL	BL
135	Wire Internal Metal Wire	BL	BL	BL	BL	BL
136	Gold Metal Plug	BL	BL	BL	BL	BL
137	Black Plastic Case	BL	BL	BL	BL	BL
138	Black Plastic Cover	BL	BL	BL	BL	BL
139	Black Plastic Base	BL	BL	BL	BL	BL
140	PCB	BL	BL	BL	BL	X



This document is issued by the Company subject to its General Conditions of service of service printed overleaf, available on request for electronic format documents, subject to terms and conditions for electronic documents is drawn to the limitation of liability indemnification and jurisdiction issues defined therein. any holder of this document is advised that information contained hereon reflects the company's findings at the time of its intervention only and within the limits of client's instructions, if any, the company's sole responsibility is to its client and this document does not exonerate parties to a transaction from exercising all their rights and obligations under the transaction documents, this document cannot be reproduced except in full, without prior written approval of the company. any unauthorized alteration, forgery or falsification of the content or appearance of this document is unlawful and offenders may be prosecuted to the fullest extent of the law unless otherwise stated the results shown in this test report refer only to the sample(s) tested.



Shenzhen Deesev Testing International Corp.
 深圳市德泽威技术检测有限公司

9th Flr., Building B, Feiyang Science & Technology Park, Longchang Rd. No.8, Bao'an, Shenzhen, Guangdong, China
 中国广东省深圳市宝安区隆昌路8号飞扬科技园B座9楼
 Tel: +86-0755-32936716, E-mail: DTI@deesev.cn



TEST REPORT

REPORT No.: **DTIBW20200397-1R**

Date: 2020-05-28

Page 9 of 33

Seq. No.	Tested Part(s)	Results				
		Pb	Cd	Hg	Cr	Br
141	Solder Point	BL	BL	BL	BL	BL
142	Patch Resistor	BL	BL	BL	BL	BL
143	Multiplayer Ceramic Chip Capacitors	BL	BL	BL	BL	BL
144	Black Ceramic Body Chip	BL	BL	BL	BL	BL
145	Gold Metal Sheet	BL	BL	BL	BL	BL
146	Plastic Packaging Film	BL	BL	BL	BL	BL
147	Highland Barley Paper	BL	BL	BL	BL	BL
148	Electrode Metal Sheet	BL	BL	BL	BL	BL
149	Aluminum Laminated Films	BL	BL	BL	BL	BL
150	Polymer Membranes	BL	BL	BL	BL	BL
151	Green Plastic Sticker	BL	BL	BL	BL	BL
152	White Plastic Sticker	BL	BL	BL	BL	BL
153	Copper Foil	BL	BL	BL	BL	BL
154	Aluminum Foil	BL	BL	BL	BL	BL
155	Gray Coating	BL	BL	BL	BL	BL
156	White Plastic Case	BL	BL	BL	BL	BL
157	White Plastic Cover	BL	BL	BL	BL	BL
158	Silver Metal Round Plug	BL	BL	BL	BL	BL
159	Black Plastic Sheet	BL	BL	BL	BL	BL
160	PCB	BL	BL	BL	BL	X



This document is issued by the Company subject to its General Conditions of service of service printed overleaf, available on request for electronic format documents, subject to terms and conditions for electronic documents is drawn to the limitation of liability indemnification and jurisdiction issues defined therein. any holder of this document is advised that information contained hereon reflects the company's findings at the time of its intervention only and within the limits of client's instructions, if any, the company's sole responsibility is to its client and this document does not exonerate parties to a transaction from exercising all their rights and obligations under the transaction documents, this document cannot be reproduced except in full, without prior written approval of the company. any unauthorized alteration, forgery or falsification of the content or appearance of this document is unlawful and offenders may be prosecuted to the fullest extent of the law unless otherwise stated the results shown in this test report refer only to the sample(s) tested.



Shenzhen Deesev Testing International Corp.
 深圳市德泽威技术检测有限公司

9th Flr., Building B, Feiyang Science & Technology Park, Longchang Rd. No.8, Bao'an, Shenzhen, Guangdong, China
 中国广东省深圳市宝安区隆昌路8号飞扬科技园B座9楼
 Tel: +86-0755-32936716, E-mail: DTI@deesev.cn



TEST REPORT

REPORT No.: **DTIBW20200397-1R**

Date: 2020-05-28

Page 10 of 33

Seq. No.	Tested Part(s)	Results				
		Pb	Cd	Hg	Cr	Br
161	Solder Point	BL	BL	BL	BL	BL
162	Black Ceramic Body Chip	BL	BL	BL	BL	BL
163	Patch Resistor	BL	BL	BL	BL	BL
164	Multiplayer Ceramic Chip Capacitors	BL	BL	BL	BL	BL
165	SMD Components	BL	BL	BL	BL	BL
166	Patch Diode	BL	BL	BL	BL	BL
167	Electrolytic Capacitor Outer Layer Plastic Leather	BL	BL	BL	BL	BL
168	Electrolytic Capacitor Silver Metal Case	BL	BL	BL	BL	BL
169	Electrolytic Capacitor Internal Sticker	BL	BL	BL	BL	BL
170	Blue Plastic Sticker	BL	BL	BL	BL	BL
171	Yellow Plastic Sticker	BL	BL	BL	BL	BL
172	Black Square Magnetic Ring	BL	BL	BL	BL	BL
173	Transformer Ceramic Frame	BL	BL	BL	BL	BL
174	Transformer Copper Winding	BL	BL	BL	BL	BL
175	White Viscose	BL	BL	BL	BL	BL
176	Black Heat Shrink Tube Sleeve	BL	BL	BL	BL	BL
177	Color Ring Resistance	BL	BL	BL	BL	BL
178	Silver Metal Pin	BL	BL	BL	BL	BL
179	Silver Metal Sheet	BL	BL	BL	BL	BL
180	Chromatic Ring Inductor	BL	BL	BL	BL	BL
181	Silver Metal Pin	BL	BL	BL	BL	BL
182	Blue Ceramic Capacitance	BL	BL	BL	BL	BL
183	Silver Metal Pin	BL	BL	BL	BL	BL
184	Electrolytic Capacitor Silver Metal Case	BL	BL	BL	BL	BL



This document is issued by the Company subject to its General Conditions of service of service printed overleaf, available on request for electronic format documents, subject to terms and conditions for electronic documents is drawn to the limitation of liability indemnification and jurisdiction issues defined therein. any holder of this document is advised that information contained hereon reflects the company's findings at the time of its intervention only and within the limits of client's instructions, if any, the company's sole responsibility is to its client and this document does not exonerate parties to a transaction from exercising all their rights and obligations under the transaction documents, this document cannot be reproduced except in full, without prior written approval of the company. any unauthorized alteration, forgery or falsification of the content or appearance of this document is unlawful and offenders may be prosecuted to the fullest extent of the law unless otherwise stated the results shown in this test report refer only to the sample(s) tested.



Shenzhen Deesev Testing International Corp.
 深圳市德泽威技术检测有限公司

9th Flr., Building B, Feiyang Science & Technology Park, Longchang Rd. No.8, Bao'an, Shenzhen, Guangdong, China
 中国广东省深圳市宝安区隆昌路8号飞扬科技园B座9楼
 Tel: +86-0755-32936716, E-mail: DTI@deesev.cn



TEST REPORT

REPORT No.: **DTIBW20200397-1R**

Date: 2020-05-28

Page 11 of 33

Seq. No.	Tested Part(s)	Results				
		Pb	Cd	Hg	Cr	Br
185	Electrolytic Capacitor Internal Sticker	BL	BL	BL	BL	BL
186	Silver Metal Case (USB)	BL	BL	BL	BL	BL
187	Internal White Plastic (USB)	BL	BL	BL	BL	X
188	Gold Metal Needles	BL	BL	BL	BL	BL
189	White Soft Plastics	BL	BL	BL	BL	BL
190	Internal Translucent Plastic	BL	BL	BL	BL	BL
191	Silver Metal Case	BL	BL	BL	BL	BL
192	Internal Black Plastic	BL	BL	BL	BL	BL
193	Gold Metal Needles	BL	BL	BL	BL	BL
194	PCB	BL	BL	BL	BL	X
195	Solder Point	BL	BL	BL	BL	BL
196	White Plastic Skin	BL	BL	BL	BL	BL
197	Silver Metal Wire	BL	BL	BL	BL	BL
198	Silver Shielding Paper	BL	BL	BL	BL	BL
199	Black Plastic Wire Outer Skin	BL	BL	BL	BL	BL
200	Red Plastic Wire Outer Skin	BL	BL	BL	BL	BL
201	Green Plastic Wire Outer Skin	BL	BL	BL	BL	BL
202	White Plastic Wire Outer Skin	BL	BL	BL	BL	BL
203	Wire Internal Metal Wire	BL	BL	BL	BL	BL
204	White Soft Plastics (USB)	BL	BL	BL	BL	BL
205	Internal Translucent Plastic (USB)	BL	BL	BL	BL	BL
206	Silver Metal Case (USB)	BL	BL	BL	BL	BL
207	Internal White Plastic (USB)	BL	BL	BL	BL	BL
208	Silver Metal Needles	BL	BL	BL	BL	BL
209	Solder Point	BL	BL	BL	BL	BL



This document is issued by the Company subject to its General Conditions of service of service printed overleaf, available on request for electronic format documents, subject to terms and conditions for electronic documents is drawn to the limitation of liability indemnification and jurisdiction issues defined therein. any holder of this document is advised that information contained hereon reflects the company's findings at the time of its intervention only and within the limits of client's instructions, if any, the company's sole responsibility is to its client and this document does not exonerate parties to a transaction from exercising all their rights and obligations under the transaction documents, this document cannot be reproduced except in full, without prior written approval of the company. any unauthorized alteration, forgery or falsification of the content or appearance of this document is unlawful and offenders may be prosecuted to the fullest extent of the law unless otherwise stated the results shown in this test report refer only to the sample(s) tested.



Shenzhen Deesev Testing International Corp.
 深圳市德泽威技术检测有限公司

9th Flr., Building B, Feiyang Science & Technology Park, Longchang Rd. No.8, Bao'an, Shenzhen, Guangdong, China
 中国广东省深圳市宝安区隆昌路8号飞扬科技园B座9楼
 Tel: +86-0755-32936716, E-mail: DTI@deesev.cn



TEST REPORT

REPORT No.: **DTIBW20200397-1R**

Date: 2020-05-28

Page 12 of 33

Remark:

(1) Results were obtained by XRF for primary screening, and further chemical testing by ICP (for Cd, Pb, Hg), UV-Vis (for Cr(VI)) and GC-MS (for PBBs, PBDEs) are recommended to be performed, if the concentration exceeds the below warning value according to IEC 62321-3-1:2013.

Element	Unit	Non-metal	Metal	Composite Material
Cd	mg/kg	$BL \leq 70-3\sigma < X < 130+3\sigma \leq OL$	$BL \leq 70-3\sigma < X < 130+3\sigma \leq OL$	$BL \leq 50-3\sigma < X < 150+3\sigma \leq OL$
Pb	mg/kg	$BL \leq 700-3\sigma < X < 1300+3\sigma \leq OL$	$BL \leq 700-3\sigma < X < 1300+3\sigma \leq OL$	$BL \leq 500-3\sigma < X < 1500+3\sigma \leq OL$
Hg	mg/kg	$BL \leq 700-3\sigma < X < 1300+3\sigma \leq OL$	$BL \leq 700-3\sigma < X < 1300+3\sigma \leq OL$	$BL \leq 500-3\sigma < X < 1500+3\sigma \leq OL$
Cr	mg/kg	$BL \leq 700-3\sigma < X$	$BL \leq 700-3\sigma < X$	$BL \leq 500-3\sigma < X$
Br	mg/kg	$BL \leq 300-3\sigma < X$	--	$BL \leq 250-3\sigma < X$

Note:

- BL = Below Limit
- OL = Over Limit
- X = Inconclusive

(2) The XRF screening test for RoHS elements – The reading may be different to the actual content in the sample be of non-uniformity composition.



This document is issued by the Company subject to its General Conditions of service of service printed overleaf, available on request for electronic format documents, subject to terms and conditions for electronic documents is drawn to the limitation of liability indemnification and jurisdiction issues defined therein. any holder of this document is advised that information contained hereon reflects the company's findings at the time of its intervention only and within the limits of client's instructions, if any, the company's sole responsibility is to its client and this document does not exonerate parties to a transaction from exercising all their rights and obligations under the transaction documents, this document cannot be reproduced except in full, without prior written approval of the company. any unauthorized alteration, forgery or falsification of the content or appearance of this document is unlawful and offenders may be prosecuted to the fullest extent of the law unless otherwise stated the results shown in this test report refer only to the sample(s) tested.



Shenzhen Deesev Testing International Corp.
深圳市德泽威技术检测有限公司

9th Flr., Building B, Feiyang Science & Technology Park, Longchang Rd. No.8, Bao'an, Shenzhen, Guangdong, China
中国广东省深圳市宝安区隆昌路8号飞扬科技园B座9楼
Tel: +86-0755-32936716, E-mail: DTI@deesev.cn



TEST REPORT

REPORT No.: **DTIBW20200397-1R**

Date: 2020-05-28

Page 13 of 33

(3) The maximum permissible limit is quoted from the document 2011/65/EU and its amendment directives 2015/863/EU:

RoHS Restricted Substances	Maximum Concentration Value (mg/kg) (by weight in homogenous materials)
Cadmium (Cd)	≤100
Lead (Pb)	≤1000
Mercury (Hg)	≤1000
Hexavalent Chromium (Cr(VI))	≤1000
Polybrominated biphenyls (PBBs)	≤1000
Polybrominate ddiphenylethers (PBDEs)	≤1000

(4) Disclaimers:

This XRF Screening report is for reference purposes only. The applicant shall make its/his/her own judgment as to whether the information provided in this XRF screening report is sufficient for its/his/her purposes.

The result shown in this XRF screening report will differ based on various factors, including but not limited to, the sample size, thickness, area, surface flatness, equipment parameters and matrix effect (e.g. plastic, rubber, metal, glass, ceramic etc.). Further wet chemical pre-treatment with relevant chemical equipment analysis are required to obtain quantitative data.



This document is issued by the Company subject to its General Conditions of service of service printed overleaf, available on request for electronic format documents, subject to terms and conditions for electronic documents is drawn to the limitation of liability indemnification and jurisdiction issues defined therein. any holder of this document is advised that information contained hereon reflects the company's findings at the time of its intervention only and within the limits of client's instructions, if any, the company's sole responsibility is to its client and this document does not exonerate parties to a transaction from exercising all their rights and obligations under the transaction documents, this document cannot be reproduced except in full, without prior written approval of the company. any unauthorized alteration, forgery or falsification of the content or appearance of this document is unlawful and offenders may be prosecuted to the fullest extent of the law unless otherwise stated the results shown in this test report refer only to the sample(s) tested.



Shenzhen Deesev Testing International Corp.
深圳市德泽威技术检测有限公司

9th Flr., Building B, Feiyang Science & Technology Park, Longchang Rd. No.8, Bao'an, Shenzhen, Guangdong, China
中国广东省深圳市宝安区隆昌路8号飞扬科技园B座9楼
Tel: +86-0755-32936716, E-mail: DTI@deesev.cn



TEST REPORT

REPORT No.: **DTIBW20200397-1R**

Date: 2020-05-28

Page 14 of 33

2、 The Test Results of Chemical Method:

Test method:

Lead, Cadmium, Mercury Content:

With reference to IEC 62321-5:2013 and IEC62321-4:2013+AMD1:2017, by acid digestion and analysis was performed by Inductively Coupled Plasma- Atomic Emission Spectrophotometer (ICP-AES)

Hexavalent Chromium Content (For metal material):

With reference to IEC 62321-7-1:2015, by boiling-water-extraction and analysis was performed by UV-visible spectrophotometer (UV-Vis)

Hexavalent Chromium Content (For non-metal material):

With reference to IEC 62321-7-2:2017, by alkaline digestion and analysis was performed by UV-visible spectrophotometer (UV-Vis)

PBBs & PBDEs Content:

With reference to IEC 62321-6:2015, by solvent extraction and analysis was performed by gas chromatographic/mass spectrometer (GC-MS)

DEHP, BBP, DBP&.DIBP content:

With reference to IEC 62321-8:2017 by solvent extraction and analysis was performed by gas chromatographic-mass spectrometer (GC-MS)



This document is issued by the Company subject to its General Conditions of service of service printed overleaf, available on request for electronic format documents, subject to terms and conditions for electronic documents is drawn to the limitation of liability indemnification and jurisdiction issues defined therein. any holder of this document is advised that information contained hereon reflects the company's findings at the time of its intervention only and within the limits of client's instructions, if any, the company's sole responsibility is to its client and this document does not exonerate parties to a transaction from exercising all their rights and obligations under the transaction documents, this document cannot be reproduced except in full, without prior written approval of the company. any unauthorized alteration, forgery or falsification of the content or appearance of this document is unlawful and offenders may be prosecuted to the fullest extent of the law unless otherwise stated the results shown in this test report refer only to the sample(s) tested.



Shenzhen Deesev Testing International Corp.
深圳市德泽威技术检测有限公司

9th Flr., Building B, Feiyang Science & Technology Park, Longchang Rd. No.8, Bao'an, Shenzhen, Guangdong, China
中国广东省深圳市宝安区隆昌路8号飞扬科技园B座9楼
Tel: +86-0755-32936716, E-mail: DTI@deesev.cn



TEST REPORT

REPORT No.: **DTIBW20200397-1R**

Date: 2020-05-28

Page 15 of 33

1) The test results of Pb

Item	Unit	MDL	Results		Limit
			7	33	
Lead(Pb)	mg/kg	2	18453*	N.D.^	≤1000
Conclusion	/	/	Pass	Pass	/

Note:

- N.D. = Not Detected or less than MDL
- MDL = Method Detection Limit
- mg/kg = ppm
- *= the weight of lead in the copper alloy does not exceed 4%(40000ppm).
- ^=This data is the retested data after rectification.



This document is issued by the Company subject to its General Conditions of service of service printed overleaf, available on request for electronic format documents, subject to terms and conditions for electronic documents is drawn to the limitation of liability indemnification and jurisdiction issues defined therein. any holder of this document is advised that information contained hereon reflects the company's findings at the time of its intervention only and within the limits of client's instructions, if any, the company's sole responsibility is to its client and this document does not exonerate parties to a transaction from exercising all their rights and obligations under the transaction documents, this document cannot be reproduced except in full, without prior written approval of the company. any unauthorized alteration, forgery or falsification of the content or appearance of this document is unlawful and offenders may be prosecuted to the fullest extent of the law unless otherwise stated the results shown in this test report refer only to the sample(s) tested.





TEST REPORT

REPORT No.: **DTIBW20200397-1R**

Date: 2020-05-28

Page 16 of 33

2) The test results of PBBs & PBDEs

Item	Unit	MDL	Results					Limit
			32	73	77	140	160	
Polybrominated Biphenyls (PBBs)								
Monobromobiphenyl	mg/kg	5	N.D.	N.D.	N.D.	N.D.	N.D.	/
Dibromobiphenyl	mg/kg	5	N.D.	N.D.	N.D.	N.D.	N.D.	/
Tribromobiphenyl	mg/kg	5	N.D.	N.D.	N.D.	N.D.	N.D.	/
Tetrabromobiphenyl	mg/kg	5	N.D.	N.D.	N.D.	N.D.	N.D.	/
Pentabromobiphenyl	mg/kg	5	N.D.	N.D.	N.D.	N.D.	N.D.	/
Hexabromobiphenyl	mg/kg	5	N.D.	N.D.	N.D.	N.D.	N.D.	/
Heptabromobiphenyl	mg/kg	5	N.D.	N.D.	N.D.	N.D.	N.D.	/
Octabromobiphenyl	mg/kg	5	N.D.	N.D.	N.D.	N.D.	N.D.	/
Nonabromodiphenyl	mg/kg	5	N.D.	N.D.	N.D.	N.D.	N.D.	/
Decabromodiphenyl	mg/kg	5	N.D.	N.D.	N.D.	N.D.	N.D.	/
Total content	mg/kg	/	N.D.	N.D.	N.D.	N.D.	N.D.	≤1000
Polybrominated Diphenylethers (PBDEs)(Mon-Deca)								
Monobromodiphenyl ether	mg/kg	5	N.D.	N.D.	N.D.	N.D.	N.D.	/
Dibromodiphenyl ether	mg/kg	5	N.D.	N.D.	N.D.	N.D.	N.D.	/
Tribromodiphenyl ether	mg/kg	5	N.D.	N.D.	N.D.	N.D.	N.D.	/
Tetrabromodiphenyl ether	mg/kg	5	N.D.	N.D.	N.D.	N.D.	N.D.	/
Pentabromodiphenyl ether	mg/kg	5	N.D.	N.D.	N.D.	N.D.	N.D.	/
Hexabromodiphenyl ether	mg/kg	5	N.D.	N.D.	N.D.	N.D.	N.D.	/
Heptabromodiphenyl ether	mg/kg	5	N.D.	N.D.	N.D.	N.D.	N.D.	/
Octabromodiphenyl ether	mg/kg	5	N.D.	N.D.	N.D.	N.D.	N.D.	/
Nonabromodiphenyl ether	mg/kg	5	N.D.	N.D.	N.D.	N.D.	N.D.	/
Decabromodiphenyl ether	mg/kg	5	N.D.	N.D.	N.D.	N.D.	N.D.	/
Total content	mg/kg	/	N.D.	N.D.	N.D.	N.D.	N.D.	≤1000
Conclusion	/	/	Pass	Pass	Pass	Pass	Pass	/



This document is issued by the Company subject to its General Conditions of service of service printed overleaf, available on request for electronic format documents, subject to terms and conditions for electronic documents is drawn to the limitation of liability indemnification and jurisdiction issues defined therein. any holder of this document is advised that information contained hereon reflects the company's findings at the time of its intervention only and within the limits of client's instructions, if any, the company's sole responsibility is to its client and this document does not exonerate parties to a transaction from exercising all their rights and obligations under the transaction documents, this document cannot be reproduced except in full, without prior written approval of the company. any unauthorized alteration, forgery or falsification of the content or appearance of this document is unlawful and offenders may be prosecuted to the fullest extent of the law, unless otherwise stated the results shown in this test report refer only to the sample(s) tested.



Shenzhen Deesev Testing International Corp.
 深圳市德泽威技术检测有限公司

9th Flr., Building B, Feiyang Science & Technology Park, Longchang Rd. No.8, Bao'an, Shenzhen, Guangdong, China
 中国广东省深圳市宝安区隆昌路8号飞扬科技园B座9楼
 Tel: +86-0755-32936716, E-mail: DTI@deesev.cn



TEST REPORT

REPORT No.: **DTIBW20200397-1R**

Date: 2020-05-28

Page 17 of 33

Item	Unit	MDL	Results		Limit
			187	194	
Polybrominated Biphenyls (PBBs)					
Monobromobiphenyl	mg/kg	5	N.D.	N.D.	/
Dibromobiphenyl	mg/kg	5	N.D.	N.D.	/
Tribromobiphenyl	mg/kg	5	N.D.	N.D.	/
Tetrabromobiphenyl	mg/kg	5	N.D.	N.D.	/
Pentabromobiphenyl	mg/kg	5	N.D.	N.D.	/
Hexabromobiphenyl	mg/kg	5	N.D.	N.D.	/
Heptabromobiphenyl	mg/kg	5	N.D.	N.D.	/
Octabromobiphenyl	mg/kg	5	N.D.	N.D.	/
Nonabromodiphenyl	mg/kg	5	N.D.	N.D.	/
Decabromodiphenyl	mg/kg	5	N.D.	N.D.	/
Total content	mg/kg	/	N.D.	N.D.	≤1000
Polybrominated Diphenylethers (PBDEs)(Mon-Deca)					
Monobromodiphenyl ether	mg/kg	5	N.D.	N.D.	/
Dibromodiphenyl ether	mg/kg	5	N.D.	N.D.	/
Tribromodiphenyl ether	mg/kg	5	N.D.	N.D.	/
Tetrabromodiphenyl ether	mg/kg	5	N.D.	N.D.	/
Pentabromodiphenyl ether	mg/kg	5	N.D.	N.D.	/
Hexabromodiphenyl ether	mg/kg	5	N.D.	N.D.	/
Heptabromodiphenyl ether	mg/kg	5	N.D.	N.D.	/
Octabromodiphenyl ether	mg/kg	5	N.D.	N.D.	/
Nonabromodiphenyl ether	mg/kg	5	N.D.	N.D.	/
Decabromodiphenyl ether	mg/kg	5	N.D.	N.D.	/
Total content	mg/kg	/	N.D.	N.D.	≤1000
Conclusion	/	/	Pass	Pass	/

Note:

- N.D. = Not Detected or less than MDL
- mg/kg = ppm
- MDL = Method Detection Limit



This document is issued by the Company subject to its General Conditions of service of service printed overleaf, available on request for electronic format documents, subject to terms and conditions for electronic documents is drawn to the limitation of liability indemnification and jurisdiction issues defined therein. any holder of this document is advised that information contained hereon reflects the company's findings at the time of its intervention only and within the limits of client's instructions, if any, the company's sole responsibility is to its client and this document does not exonerate parties to a transaction from exercising all their rights and obligations under the transaction documents, this document cannot be reproduced except in full, without prior written approval of the company. any unauthorized alteration, forgery or falsification of the content or appearance of this document is unlawful and offenders may be prosecuted to the fullest extent of the law, unless otherwise stated the results shown in this test report refer only to the sample(s) tested.



Shenzhen Deesev Testing International Corp.
 深圳市德泽威技术检测有限公司

9th Flr., Building B, Feiyang Science & Technology Park, Longchang Rd. No.8, Bao'an, Shenzhen, Guangdong, China
 中国广东省深圳市宝安区隆昌路8号飞扬科技园B座9楼
 Tel: +86-0755-32936716, E-mail: DTI@deesev.cn



TEST REPORT

REPORT No.: **DTIBW20200397-1R**

Date: 2020-05-28

Page 18 of 33

3) The test results of DEHP, BBP, DBP & DIBP

Item	Unit	MDL	Results					Limit
			1	2	3	5	8	
Di-2-ethylhexyl phthalate (DEHP)	mg/kg	30	N.D.	N.D.	N.D.	N.D.	N.D.	≤1000
Benzyl-n-butyl phthalate (BBP)	mg/kg	30	N.D.	N.D.	N.D.	N.D.	N.D.	≤1000
Di-n-butyl phthalate (DBP)	mg/kg	30	N.D.	N.D.	N.D.	N.D.	N.D.	≤1000
Di-iso-butyl phthalate (DIBP)	mg/kg	30	N.D.	N.D.	N.D.	N.D.	N.D.	≤1000
Conclusion	/	/	Pass	Pass	Pass	Pass	Pass	/

Item	Unit	MDL	Results					Limit
			9	10	11	12	15	
Di-2-ethylhexyl phthalate (DEHP)	mg/kg	30	N.D.	N.D.	N.D.	N.D.	N.D.	≤1000
Benzyl-n-butyl phthalate (BBP)	mg/kg	30	N.D.	N.D.	N.D.	N.D.	N.D.	≤1000
Di-n-butyl phthalate (DBP)	mg/kg	30	N.D.	N.D.	N.D.	N.D.	N.D.	≤1000
Di-iso-butyl phthalate (DIBP)	mg/kg	30	N.D.	N.D.	N.D.	N.D.	N.D.	≤1000
Conclusion	/	/	Pass	Pass	Pass	Pass	Pass	/

Item	Unit	MDL	Results					Limit
			16	17	18	20	21	
Di-2-ethylhexyl phthalate (DEHP)	mg/kg	30	N.D.	N.D.	N.D.	N.D.	N.D.	≤1000
Benzyl-n-butyl phthalate (BBP)	mg/kg	30	N.D.	N.D.	N.D.	N.D.	N.D.	≤1000
Di-n-butyl phthalate (DBP)	mg/kg	30	N.D.	N.D.	N.D.	N.D.	N.D.	≤1000
Di-iso-butyl phthalate (DIBP)	mg/kg	30	N.D.	N.D.	N.D.	N.D.	N.D.	≤1000
Conclusion	/	/	Pass	Pass	Pass	Pass	Pass	/



This document is issued by the Company subject to its General Conditions of service of service printed overleaf, available on request for electronic format documents, subject to terms and conditions for electronic documents is drawn to the limitation of liability indemnification and jurisdiction issues defined therein. any holder of this document is advised that information contained hereon reflects the company's findings at the time of its intervention only and within the limits of client's instructions, if any, the company's sole responsibility is to its client and this document does not exonerate parties to a transaction from exercising all their rights and obligations under the transaction documents, this document cannot be reproduced except in full, without prior written approval of the company. any unauthorized alteration, forgery or falsification of the content or appearance of this document is unlawful and offenders may be prosecuted to the fullest extent of the law, unless otherwise stated the results shown in this test report refer only to the sample(s) tested.



Shenzhen Deesev Testing International Corp.
 深圳市德泽威技术检测有限公司

9th Flr., Building B, Feiyang Science & Technology Park, Longchang Rd. No.8, Bao'an, Shenzhen, Guangdong, China
 中国广东省深圳市宝安区隆昌路8号飞扬科技园B座9楼
 Tel: +86-0755-32936716, E-mail: DTI@deesev.cn



TEST REPORT

REPORT No.: **DTIBW20200397-1R**

Date: 2020-05-28

Page 19 of 33

Item	Unit	MDL	Results					Limit
			22	23	24	25	26	
Di-2-ethylhexyl phthalate (DEHP)	mg/kg	30	N.D.	N.D.	N.D.	N.D.	N.D.	≤1000
Benzyl-n-butyl phthalate (BBP)	mg/kg	30	N.D.	N.D.	N.D.	N.D.	N.D.	≤1000
Di-n-butyl phthalate (DBP)	mg/kg	30	N.D.	N.D.	N.D.	N.D.	N.D.	≤1000
Di-iso-butyl phthalate (DIBP)	mg/kg	30	N.D.	N.D.	N.D.	N.D.	N.D.	≤1000
Conclusion	/	/	Pass	Pass	Pass	Pass	Pass	/

Item	Unit	MDL	Results					Limit
			27	28	29	30	32	
Di-2-ethylhexyl phthalate (DEHP)	mg/kg	30	N.D.	N.D.	N.D.	N.D.	N.D.	≤1000
Benzyl-n-butyl phthalate (BBP)	mg/kg	30	N.D.	N.D.	N.D.	N.D.	N.D.	≤1000
Di-n-butyl phthalate (DBP)	mg/kg	30	N.D.	N.D.	N.D.	N.D.	N.D.	≤1000
Di-iso-butyl phthalate (DIBP)	mg/kg	30	N.D.	N.D.	N.D.	N.D.	N.D.	≤1000
Conclusion	/	/	Pass	Pass	Pass	Pass	Pass	/

Item	Unit	MDL	Results					Limit
			37	39	41	44	45	
Di-2-ethylhexyl phthalate (DEHP)	mg/kg	30	N.D.	N.D.	N.D.	N.D.	N.D.	≤1000
Benzyl-n-butyl phthalate (BBP)	mg/kg	30	N.D.	N.D.	N.D.	N.D.	N.D.	≤1000
Di-n-butyl phthalate (DBP)	mg/kg	30	N.D.	N.D.	N.D.	N.D.	N.D.	≤1000
Di-iso-butyl phthalate (DIBP)	mg/kg	30	N.D.	N.D.	N.D.	N.D.	N.D.	≤1000
Conclusion	/	/	Pass	Pass	Pass	Pass	Pass	/



This document is issued by the Company subject to its General Conditions of service of service printed overleaf, available on request for electronic format documents, subject to terms and conditions for electronic documents is drawn to the limitation of liability indemnification and jurisdiction issues defined therein. any holder of this document is advised that information contained hereon reflects the company's findings at the time of its intervention only and within the limits of client's instructions, if any, the company's sole responsibility is to its client and this document does not exonerate parties to a transaction from exercising all their rights and obligations under the transaction documents, this document cannot be reproduced except in full, without prior written approval of the company. any unauthorized alteration, forgery or falsification of the content or appearance of this document is unlawful and offenders may be prosecuted to the fullest extent of the law, unless otherwise stated the results shown in this test report refer only to the sample(s) tested.



Shenzhen Deesev Testing International Corp.
 深圳市德泽威技术检测有限公司

9th Flr., Building B, Feiyang Science & Technology Park, Longchang Rd. No.8, Bao'an, Shenzhen, Guangdong, China
 中国广东省深圳市宝安区隆昌路8号飞扬科技园B座9楼
 Tel: +86-0755-32936716, E-mail: DTI@deesev.cn



TEST REPORT

REPORT No.: **DTIBW20200397-1R**

Date: 2020-05-28

Page 20 of 33

Item	Unit	MDL	Results					Limit
			47	48	49	50	51	
Di-2-ethylhexyl phthalate (DEHP)	mg/kg	30	N.D.	N.D.	N.D.	N.D.	N.D.	≤1000
Benzyl-n-butyl phthalate (BBP)	mg/kg	30	N.D.	N.D.	N.D.	N.D.	N.D.	≤1000
Di-n-butyl phthalate (DBP)	mg/kg	30	N.D.	N.D.	N.D.	N.D.	N.D.	≤1000
Di-iso-butyl phthalate (DIBP)	mg/kg	30	N.D.	N.D.	N.D.	N.D.	N.D.	≤1000
Conclusion	/	/	Pass	Pass	Pass	Pass	Pass	/

Item	Unit	MDL	Results					Limit
			52	53	56	58	59	
Di-2-ethylhexyl phthalate (DEHP)	mg/kg	30	N.D.	N.D.	N.D.	N.D.	N.D.	≤1000
Benzyl-n-butyl phthalate (BBP)	mg/kg	30	N.D.	N.D.	N.D.	N.D.	N.D.	≤1000
Di-n-butyl phthalate (DBP)	mg/kg	30	N.D.	N.D.	N.D.	N.D.	N.D.	≤1000
Di-iso-butyl phthalate (DIBP)	mg/kg	30	N.D.	N.D.	N.D.	N.D.	N.D.	≤1000
Conclusion	/	/	Pass	Pass	Pass	Pass	Pass	/

Item	Unit	MDL	Results					Limit
			60	61	63	64	65	
Di-2-ethylhexyl phthalate (DEHP)	mg/kg	30	N.D.	N.D.	N.D.	N.D.	N.D.	≤1000
Benzyl-n-butyl phthalate (BBP)	mg/kg	30	N.D.	N.D.	N.D.	N.D.	N.D.	≤1000
Di-n-butyl phthalate (DBP)	mg/kg	30	N.D.	N.D.	N.D.	N.D.	N.D.	≤1000
Di-iso-butyl phthalate (DIBP)	mg/kg	30	N.D.	N.D.	N.D.	N.D.	N.D.	≤1000
Conclusion	/	/	Pass	Pass	Pass	Pass	Pass	/



This document is issued by the Company subject to its General Conditions of service of service printed overleaf, available on request for electronic format documents, subject to terms and conditions for electronic documents is drawn to the limitation of liability indemnification and jurisdiction issues defined therein. any holder of this document is advised that information contained hereon reflects the company's findings at the time of its intervention only and within the limits of client's instructions, if any, the company's sole responsibility is to its client and this document does not exonerate parties to a transaction from exercising all their rights and obligations under the transaction documents, this document cannot be reproduced except in full, without prior written approval of the company. any unauthorized alteration, forgery or falsification of the content or appearance of this document is unlawful and offenders may be prosecuted to the fullest extent of the law, unless otherwise stated the results shown in this test report refer only to the sample(s) tested.



Shenzhen Deesev Testing International Corp.
 深圳市德泽威技术检测有限公司

9th Flr., Building B, Feiyang Science & Technology Park, Longchang Rd. No.8, Bao'an, Shenzhen, Guangdong, China
 中国广东省深圳市宝安区隆昌路8号飞扬科技园B座9楼
 Tel: +86-0755-32936716, E-mail: DTI@deesev.cn



TEST REPORT

REPORT No.: **DTIBW20200397-1R**

Date: 2020-05-28

Page 21 of 33

Item	Unit	MDL	Results					Limit
			67	68	70	73	75	
Di-2-ethylhexyl phthalate (DEHP)	mg/kg	30	N.D.	N.D.	N.D.	N.D.	N.D.	≤1000
Benzyl-n-butyl phthalate (BBP)	mg/kg	30	N.D.	N.D.	N.D.	N.D.	N.D.	≤1000
Di-n-butyl phthalate (DBP)	mg/kg	30	N.D.	N.D.	N.D.	N.D.	N.D.	≤1000
Di-iso-butyl phthalate (DIBP)	mg/kg	30	N.D.	N.D.	N.D.	N.D.	N.D.	≤1000
Conclusion	/	/	Pass	Pass	Pass	Pass	Pass	/

Item	Unit	MDL	Results					Limit
			77	79	80	81	82	
Di-2-ethylhexyl phthalate (DEHP)	mg/kg	30	N.D.	N.D.	N.D.	N.D.	N.D.	≤1000
Benzyl-n-butyl phthalate (BBP)	mg/kg	30	N.D.	N.D.	N.D.	N.D.	N.D.	≤1000
Di-n-butyl phthalate (DBP)	mg/kg	30	N.D.	N.D.	N.D.	N.D.	N.D.	≤1000
Di-iso-butyl phthalate (DIBP)	mg/kg	30	N.D.	N.D.	N.D.	N.D.	N.D.	≤1000
Conclusion	/	/	Pass	Pass	Pass	Pass	Pass	/

Item	Unit	MDL	Results					Limit
			86	87	88	89	90	
Di-2-ethylhexyl phthalate (DEHP)	mg/kg	30	N.D.	N.D.	N.D.	N.D.	N.D.	≤1000
Benzyl-n-butyl phthalate (BBP)	mg/kg	30	N.D.	N.D.	N.D.	N.D.	N.D.	≤1000
Di-n-butyl phthalate (DBP)	mg/kg	30	N.D.	N.D.	N.D.	N.D.	N.D.	≤1000
Di-iso-butyl phthalate (DIBP)	mg/kg	30	N.D.	N.D.	N.D.	N.D.	N.D.	≤1000
Conclusion	/	/	Pass	Pass	Pass	Pass	Pass	/



This document is issued by the Company subject to its General Conditions of service of service printed overleaf, available on request for electronic format documents, subject to terms and conditions for electronic documents is drawn to the limitation of liability indemnification and jurisdiction issues defined therein. any holder of this document is advised that information contained hereon reflects the company's findings at the time of its intervention only and within the limits of client's instructions, if any, the company's sole responsibility is to its client and this document does not exonerate parties to a transaction from exercising all their rights and obligations under the transaction documents, this document cannot be reproduced except in full, without prior written approval of the company. any unauthorized alteration, forgery or falsification of the content or appearance of this document is unlawful and offenders may be prosecuted to the fullest extent of the law, unless otherwise stated the results shown in this test report refer only to the sample(s) tested.



Shenzhen Deesev Testing International Corp.
 深圳市德泽威技术检测有限公司

9th Flr., Building B, Feiyang Science & Technology Park, Longchang Rd. No.8, Bao'an, Shenzhen, Guangdong, China
 中国广东省深圳市宝安区隆昌路8号飞扬科技园B座9楼
 Tel: +86-0755-32936716, E-mail: DTI@deesev.cn



TEST REPORT

REPORT No.: **DTIBW20200397-1R**

Date: 2020-05-28

Page 22 of 33

Item	Unit	MDL	Results					Limit
			93	95	97	98	99	
Di-2-ethylhexyl phthalate (DEHP)	mg/kg	30	N.D.	N.D.	N.D.	N.D.	N.D.	≤1000
Benzyl-n-butyl phthalate (BBP)	mg/kg	30	N.D.	N.D.	N.D.	N.D.	N.D.	≤1000
Di-n-butyl phthalate (DBP)	mg/kg	30	N.D.	N.D.	N.D.	N.D.	N.D.	≤1000
Di-iso-butyl phthalate (DIBP)	mg/kg	30	N.D.	N.D.	N.D.	N.D.	N.D.	≤1000
Conclusion	/	/	Pass	Pass	Pass	Pass	Pass	/

Item	Unit	MDL	Results					Limit
			100	101	102	104	107	
Di-2-ethylhexyl phthalate (DEHP)	mg/kg	30	N.D.	N.D.	N.D.	N.D.	N.D.	≤1000
Benzyl-n-butyl phthalate (BBP)	mg/kg	30	N.D.	N.D.	N.D.	N.D.	N.D.	≤1000
Di-n-butyl phthalate (DBP)	mg/kg	30	N.D.	N.D.	N.D.	N.D.	N.D.	≤1000
Di-iso-butyl phthalate (DIBP)	mg/kg	30	N.D.	N.D.	N.D.	N.D.	N.D.	≤1000
Conclusion	/	/	Pass	Pass	Pass	Pass	Pass	/

Item	Unit	MDL	Results					Limit
			108	110	111	112	114	
Di-2-ethylhexyl phthalate (DEHP)	mg/kg	30	N.D.	N.D.	N.D.	N.D.	N.D.	≤1000
Benzyl-n-butyl phthalate (BBP)	mg/kg	30	N.D.	N.D.	N.D.	N.D.	N.D.	≤1000
Di-n-butyl phthalate (DBP)	mg/kg	30	N.D.	N.D.	N.D.	N.D.	N.D.	≤1000
Di-iso-butyl phthalate (DIBP)	mg/kg	30	N.D.	N.D.	N.D.	N.D.	N.D.	≤1000
Conclusion	/	/	Pass	Pass	Pass	Pass	Pass	/



This document is issued by the Company subject to its General Conditions of service of service printed overleaf, available on request for electronic format documents, subject to terms and conditions for electronic documents is drawn to the limitation of liability indemnification and jurisdiction issues defined therein. any holder of this document is advised that information contained hereon reflects the company's findings at the time of its intervention only and within the limits of client's instructions, if any, the company's sole responsibility is to its client and this document does not exonerate parties to a transaction from exercising all their rights and obligations under the transaction documents, this document cannot be reproduced except in full, without prior written approval of the company. any unauthorized alteration, forgery or falsification of the content or appearance of this document is unlawful and offenders may be prosecuted to the fullest extent of the law, unless otherwise stated the results shown in this test report refer only to the sample(s) tested.



Shenzhen Deesev Testing International Corp.
 深圳市德泽威技术检测有限公司

9th Flr., Building B, Feiyang Science & Technology Park, Longchang Rd. No.8, Bao'an, Shenzhen, Guangdong, China
 中国广东省深圳市宝安区隆昌路8号飞扬科技园B座9楼
 Tel: +86-0755-32936716, E-mail: DTI@deesev.cn



TEST REPORT

REPORT No.: **DTIBW20200397-1R**

Date: 2020-05-28

Page 23 of 33

Item	Unit	MDL	Results					Limit
			120	121	123	125	128	
Di-2-ethylhexyl phthalate (DEHP)	mg/kg	30	N.D.	N.D.	N.D.	N.D.	N.D.	≤1000
Benzyl-n-butyl phthalate (BBP)	mg/kg	30	N.D.	N.D.	N.D.	N.D.	N.D.	≤1000
Di-n-butyl phthalate (DBP)	mg/kg	30	N.D.	N.D.	N.D.	N.D.	N.D.	≤1000
Di-iso-butyl phthalate (DIBP)	mg/kg	30	N.D.	N.D.	N.D.	N.D.	N.D.	≤1000
Conclusion	/	/	Pass	Pass	Pass	Pass	Pass	/

Item	Unit	MDL	Results					Limit
			129	130	132	133	134	
Di-2-ethylhexyl phthalate (DEHP)	mg/kg	30	N.D.	N.D.	N.D.	N.D.	N.D.	≤1000
Benzyl-n-butyl phthalate (BBP)	mg/kg	30	N.D.	N.D.	N.D.	N.D.	N.D.	≤1000
Di-n-butyl phthalate (DBP)	mg/kg	30	N.D.	N.D.	N.D.	N.D.	N.D.	≤1000
Di-iso-butyl phthalate (DIBP)	mg/kg	30	N.D.	N.D.	N.D.	N.D.	N.D.	≤1000
Conclusion	/	/	Pass	Pass	Pass	Pass	Pass	/

Item	Unit	MDL	Results					Limit
			137	138	139	140	142	
Di-2-ethylhexyl phthalate (DEHP)	mg/kg	30	N.D.	N.D.	N.D.	N.D.	N.D.	≤1000
Benzyl-n-butyl phthalate (BBP)	mg/kg	30	N.D.	N.D.	N.D.	N.D.	N.D.	≤1000
Di-n-butyl phthalate (DBP)	mg/kg	30	N.D.	N.D.	N.D.	N.D.	N.D.	≤1000
Di-iso-butyl phthalate (DIBP)	mg/kg	30	N.D.	N.D.	N.D.	N.D.	N.D.	≤1000
Conclusion	/	/	Pass	Pass	Pass	Pass	Pass	/



This document is issued by the Company subject to its General Conditions of service of service printed overleaf, available on request for electronic format documents, subject to terms and conditions for electronic documents is drawn to the limitation of liability indemnification and jurisdiction issues defined therein. any holder of this document is advised that information contained hereon reflects the company's findings at the time of its intervention only and within the limits of client's instructions, if any, the company's sole responsibility is to its client and this document does not exonerate parties to a transaction from exercising all their rights and obligations under the transaction documents, this document cannot be reproduced except in full, without prior written approval of the company. any unauthorized alteration, forgery or falsification of the content or appearance of this document is unlawful and offenders may be prosecuted to the fullest extent of the law, unless otherwise stated the results shown in this test report refer only to the sample(s) tested.



Shenzhen Deesev Testing International Corp.
 深圳市德泽威技术检测有限公司

9th Flr., Building B, Feiyang Science & Technology Park, Longchang Rd. No.8, Bao'an, Shenzhen, Guangdong, China
 中国广东省深圳市宝安区隆昌路8号飞扬科技园B座9楼
 Tel: +86-0755-32936716, E-mail: DTI@deesev.cn



TEST REPORT

REPORT No.: **DTIBW20200397-1R**

Date: 2020-05-28

Page 24 of 33

Item	Unit	MDL	Results					Limit
			143	144	146	147	149	
Di-2-ethylhexyl phthalate (DEHP)	mg/kg	30	N.D.	N.D.	N.D.	N.D.	N.D.	≤1000
Benzyl-n-butyl phthalate (BBP)	mg/kg	30	N.D.	N.D.	N.D.	N.D.	N.D.	≤1000
Di-n-butyl phthalate (DBP)	mg/kg	30	N.D.	N.D.	N.D.	N.D.	N.D.	≤1000
Di-iso-butyl phthalate (DIBP)	mg/kg	30	N.D.	N.D.	N.D.	N.D.	N.D.	≤1000
Conclusion	/	/	Pass	Pass	Pass	Pass	Pass	/

Item	Unit	MDL	Results					Limit
			150	151	152	155	156	
Di-2-ethylhexyl phthalate (DEHP)	mg/kg	30	N.D.	N.D.	N.D.	N.D.	N.D.	≤1000
Benzyl-n-butyl phthalate (BBP)	mg/kg	30	N.D.	N.D.	N.D.	N.D.	N.D.	≤1000
Di-n-butyl phthalate (DBP)	mg/kg	30	N.D.	N.D.	N.D.	N.D.	N.D.	≤1000
Di-iso-butyl phthalate (DIBP)	mg/kg	30	N.D.	N.D.	N.D.	N.D.	N.D.	≤1000
Conclusion	/	/	Pass	Pass	Pass	Pass	Pass	/

Item	Unit	MDL	Results					Limit
			157	159	160	162	163	
Di-2-ethylhexyl phthalate (DEHP)	mg/kg	30	N.D.	N.D.	N.D.	N.D.	N.D.	≤1000
Benzyl-n-butyl phthalate (BBP)	mg/kg	30	N.D.	N.D.	N.D.	N.D.	N.D.	≤1000
Di-n-butyl phthalate (DBP)	mg/kg	30	N.D.	N.D.	N.D.	N.D.	N.D.	≤1000
Di-iso-butyl phthalate (DIBP)	mg/kg	30	N.D.	N.D.	N.D.	N.D.	N.D.	≤1000
Conclusion	/	/	Pass	Pass	Pass	Pass	Pass	/



This document is issued by the Company subject to its General Conditions of service of service printed overleaf, available on request for electronic format documents, subject to terms and conditions for electronic documents is drawn to the limitation of liability indemnification and jurisdiction issues defined therein. any holder of this document is advised that information contained hereon reflects the company's findings at the time of its intervention only and within the limits of client's instructions, if any, the company's sole responsibility is to its client and this document does not exonerate parties to a transaction from exercising all their rights and obligations under the transaction documents, this document cannot be reproduced except in full, without prior written approval of the company. any unauthorized alteration, forgery or falsification of the content or appearance of this document is unlawful and offenders may be prosecuted to the fullest extent of the law, unless otherwise stated the results shown in this test report refer only to the sample(s) tested.



Shenzhen Deesev Testing International Corp.
 深圳市德泽威技术检测有限公司

9th Flr., Building B, Feiyang Science & Technology Park, Longchang Rd. No.8, Bao'an, Shenzhen, Guangdong, China
 中国广东省深圳市宝安区隆昌路8号飞扬科技园B座9楼
 Tel: +86-0755-32936716, E-mail: DTI@deesev.cn



TEST REPORT

REPORT No.: **DTIBW20200397-1R**

Date: 2020-05-28

Page 25 of 33

Item	Unit	MDL	Results					Limit
			164	165	166	167	169	
Di-2-ethylhexyl phthalate (DEHP)	mg/kg	30	N.D.	N.D.	N.D.	N.D.	N.D.	≤1000
Benzyl-n-butyl phthalate (BBP)	mg/kg	30	N.D.	N.D.	N.D.	N.D.	N.D.	≤1000
Di-n-butyl phthalate (DBP)	mg/kg	30	N.D.	N.D.	N.D.	N.D.	N.D.	≤1000
Di-iso-butyl phthalate (DIBP)	mg/kg	30	N.D.	N.D.	N.D.	N.D.	N.D.	≤1000
Conclusion	/	/	Pass	Pass	Pass	Pass	Pass	/

Item	Unit	MDL	Results					Limit
			170	171	172	173	175	
Di-2-ethylhexyl phthalate (DEHP)	mg/kg	30	N.D.	N.D.	N.D.	N.D.	N.D.	≤1000
Benzyl-n-butyl phthalate (BBP)	mg/kg	30	N.D.	N.D.	N.D.	N.D.	N.D.	≤1000
Di-n-butyl phthalate (DBP)	mg/kg	30	N.D.	N.D.	N.D.	N.D.	N.D.	≤1000
Di-iso-butyl phthalate (DIBP)	mg/kg	30	N.D.	N.D.	N.D.	N.D.	N.D.	≤1000
Conclusion	/	/	Pass	Pass	Pass	Pass	Pass	/

Item	Unit	MDL	Results					Limit
			176	177	180	182	185	
Di-2-ethylhexyl phthalate (DEHP)	mg/kg	30	N.D.	N.D.	N.D.	N.D.	N.D.	≤1000
Benzyl-n-butyl phthalate (BBP)	mg/kg	30	N.D.	N.D.	N.D.	N.D.	N.D.	≤1000
Di-n-butyl phthalate (DBP)	mg/kg	30	N.D.	N.D.	N.D.	N.D.	N.D.	≤1000
Di-iso-butyl phthalate (DIBP)	mg/kg	30	N.D.	N.D.	N.D.	N.D.	N.D.	≤1000
Conclusion	/	/	Pass	Pass	Pass	Pass	Pass	/



This document is issued by the Company subject to its General Conditions of service of service printed overleaf, available on request for electronic format documents, subject to terms and conditions for electronic documents is drawn to the limitation of liability indemnification and jurisdiction issues defined therein. any holder of this document is advised that information contained hereon reflects the company's findings at the time of its intervention only and within the limits of client's instructions, if any, the company's sole responsibility is to its client and this document does not exonerate parties to a transaction from exercising all their rights and obligations under the transaction documents, this document cannot be reproduced except in full, without prior written approval of the company. any unauthorized alteration, forgery or falsification of the content or appearance of this document is unlawful and offenders may be prosecuted to the fullest extent of the law, unless otherwise stated the results shown in this test report refer only to the sample(s) tested.



Shenzhen Deesev Testing International Corp.
 深圳市德泽威技术检测有限公司

9th Flr., Building B, Feiyang Science & Technology Park, Longchang Rd. No.8, Bao'an, Shenzhen, Guangdong, China
 中国广东省深圳市宝安区隆昌路8号飞扬科技园B座9楼
 Tel: +86-0755-32936716, E-mail: DTI@deesev.cn



TEST REPORT

REPORT No.: **DTIBW20200397-1R**

Date: 2020-05-28

Page 26 of 33

Item	Unit	MDL	Results					Limit
			187	189	190	192	194	
Di-2-ethylhexyl phthalate (DEHP)	mg/kg	30	N.D.	N.D.	N.D.	N.D.	N.D.	≤1000
Benzyl-n-butyl phthalate (BBP)	mg/kg	30	N.D.	N.D.	N.D.	N.D.	N.D.	≤1000
Di-n-butyl phthalate (DBP)	mg/kg	30	N.D.	N.D.	N.D.	N.D.	N.D.	≤1000
Di-iso-butyl phthalate (DIBP)	mg/kg	30	N.D.	N.D.	N.D.	N.D.	N.D.	≤1000
Conclusion	/	/	Pass	Pass	Pass	Pass	Pass	/

Item	Unit	MDL	Results					Limit
			196	198	199	200	201	
Di-2-ethylhexyl phthalate (DEHP)	mg/kg	30	N.D.	N.D.	N.D.	N.D.	N.D.	≤1000
Benzyl-n-butyl phthalate (BBP)	mg/kg	30	N.D.	N.D.	N.D.	N.D.	N.D.	≤1000
Di-n-butyl phthalate (DBP)	mg/kg	30	366	N.D.	40	42	43	≤1000
Di-iso-butyl phthalate (DIBP)	mg/kg	30	N.D.	N.D.	N.D.	N.D.	N.D.	≤1000
Conclusion	/	/	Pass	Pass	Pass	Pass	Pass	/

Item	Unit	MDL	Results				Limit
			202	204	205	207	
Di-2-ethylhexyl phthalate (DEHP)	mg/kg	30	N.D.	N.D.	N.D.	N.D.	≤1000
Benzyl-n-butyl phthalate (BBP)	mg/kg	30	N.D.	N.D.	N.D.	N.D.	≤1000
Di-n-butyl phthalate (DBP)	mg/kg	30	39	N.D.	N.D.	N.D.	≤1000
Di-iso-butyl phthalate (DIBP)	mg/kg	30	N.D.	N.D.	N.D.	N.D.	≤1000
Conclusion	/	/	Pass	Pass	Pass	Pass	/

Note:

- N.D. = Not Detected or less than MDL
- mg/kg = ppm
- MDL = Method Detection Limit
- Flow chart appendix is included.
- Photo appendix is included.



This document is issued by the Company subject to its General Conditions of service of service printed overleaf, available on request for electronic format documents, subject to terms and conditions for electronic documents is drawn to the limitation of liability indemnification and jurisdiction issues defined therein. any holder of this document is advised that information contained hereon reflects the company's findings at the time of its intervention only and within the limits of client's instructions, if any, the company's sole responsibility is to its client and this document does not exonerate parties to a transaction from exercising all their rights and obligations under the transaction documents, this document cannot be reproduced except in full, without prior written approval of the company. any unauthorized alteration, forgery or falsification of the content or appearance of this document is unlawful and offenders may be prosecuted to the fullest extent of the law, unless otherwise stated the results shown in this test report refer only to the sample(s) tested.





TEST REPORT

REPORT No.: **DTIBW20200397-1R**

Date: 2020-05-28

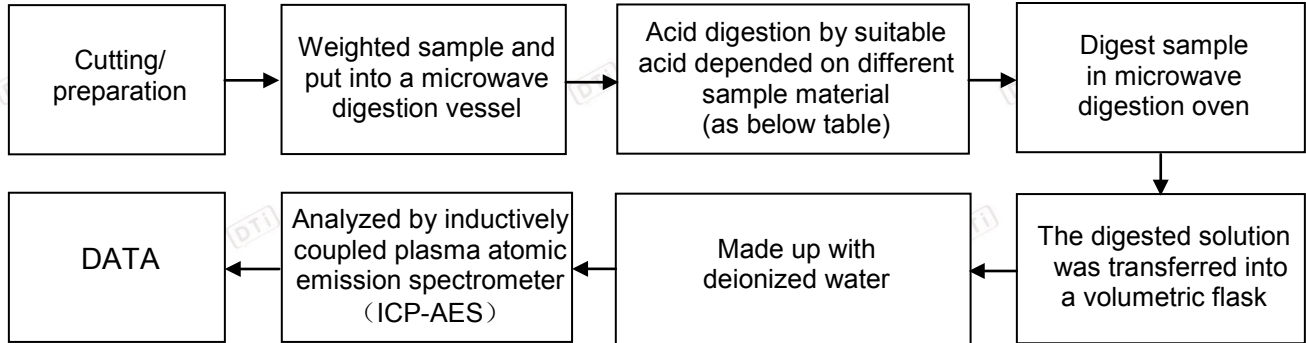
Page 27 of 33

Appendix I

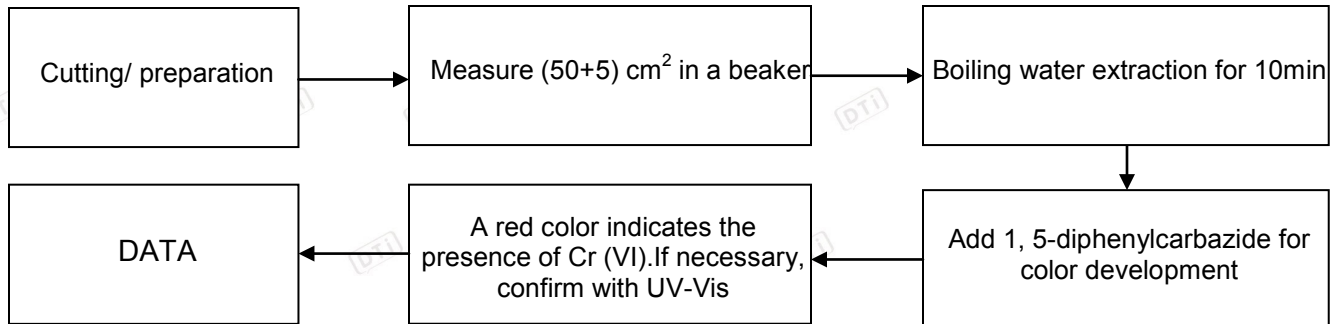
Test Flow chart

1. Test Flowchart for Cd / Pb /Hg content

These samples were dissolved totally by pre-conditioning method according to below flow chart.



2. Test Flowchart for Cr⁶⁺ content (Metal material)





This document is issued by the Company subject to its General Conditions of service of service printed overleaf, available on request for electronic format documents, subject to terms and conditions for electronic documents is drawn to the limitation of liability indemnification and jurisdiction issues defined therein. any holder of this document is advised that information contained hereon reflects the company's findings at the time of its intervention only and within the limits of client's instructions, if any, the company's sole responsibility is to its client and this document does not exonerate parties to a transaction from exercising all their rights and obligations under the transaction documents, this document cannot be reproduced except in full, without prior written approval of the company. any unauthorized alteration, forgery or falsification of the content or appearance of this document is unlawful and offenders may be prosecuted to the fullest extent of the law unless otherwise stated the results shown in this test report refer only to the sample(s) tested.





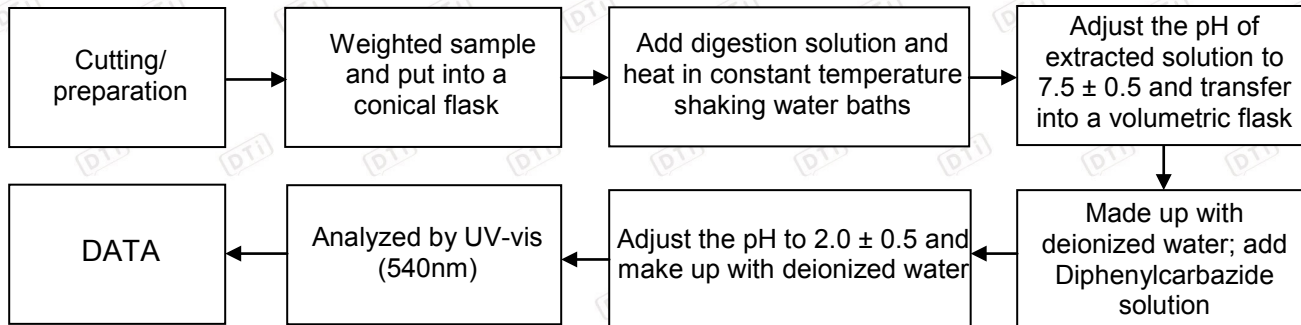
TEST REPORT

REPORT No.: **DTIBW20200397-1R**

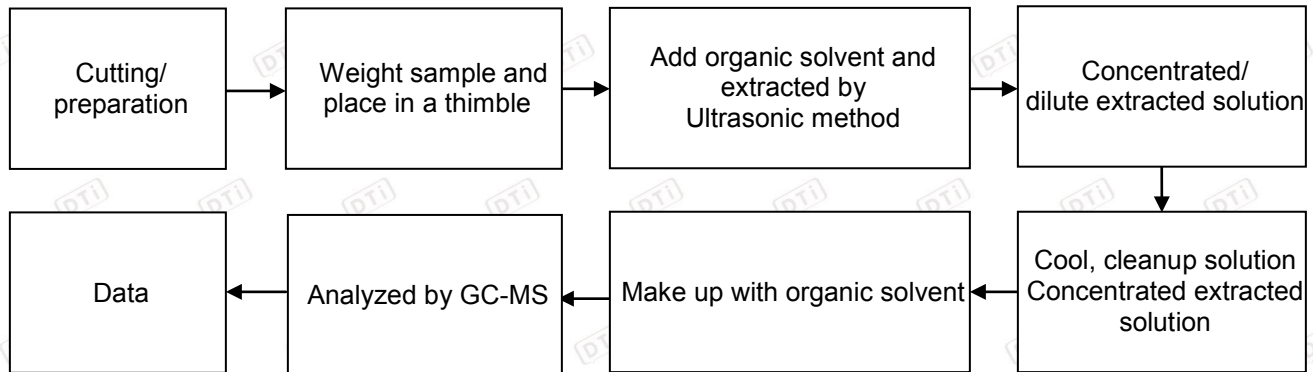
Date: 2020-05-28

Page 28 of 33

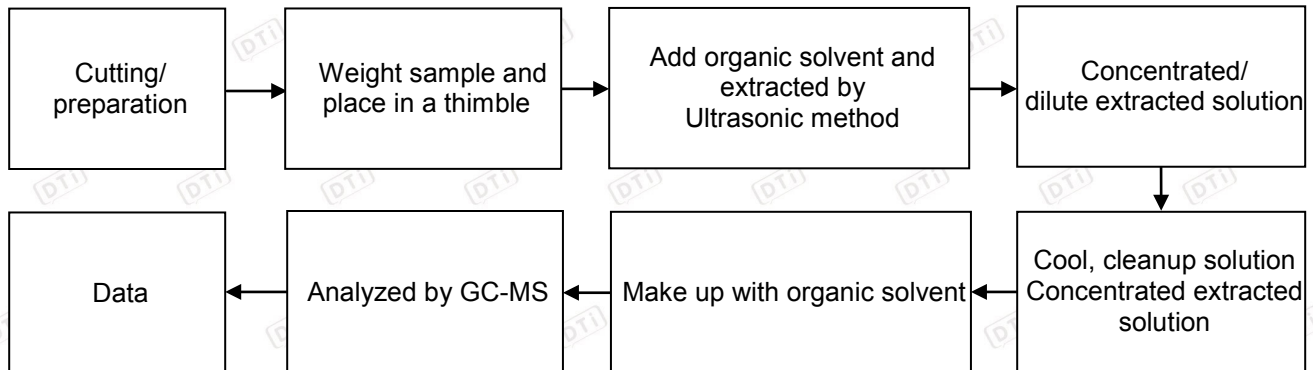
3. Test Flowchart for Cr⁶⁺ content (Non-metal material)



4. Test Flowchart for PBBs & PBDEs content



5. Test Flowchart for DEHP, BBP, DBP & DIBP content





This document is issued by the Company subject to its General Conditions of service of service printed overleaf, available on request for electronic format documents, subject to terms and conditions for electronic documents is drawn to the limitation of liability indemnification and jurisdiction issues defined therein. any holder of this document is advised that information contained hereon reflects the company's findings at the time of its intervention only and within the limits of client's instructions, if any, the company's sole responsibility is to its client and this document does not exonerate parties to a transaction from exercising all their rights and obligations under the transaction documents, this document cannot be reproduced except in full, without prior written approval of the company. any unauthorized alteration, forgery or falsification of the content or appearance of this document is unlawful and offenders may be prosecuted to the fullest extent of the law unless otherwise stated the results shown in this test report refer only to the sample(s) tested.





TEST REPORT

REPORT No.: **DTIBW20200397-1R**

Date: 2020-05-28

Page 29 of 33

Table:

Sample material	Digestion Acid
Steel, copper, aluminum, solder	Aqua regia, HNO ₃ , HCl, HF, H ₂ O ₂
Glass	HNO ₃ /HF
Gold, platinum, palladium, ceramic	Aqua regia
Silver	HNO ₃
Plastic	H ₂ SO ₄ , H ₂ O ₂ , HNO ₃ , HCl
Others	Any acid to total digestion



This document is issued by the Company subject to its General Conditions of service of service printed overleaf, available on request for electronic format documents, subject to terms and conditions for electronic documents is drawn to the limitation of liability indemnification and jurisdiction issues defined therein. any holder of this document is advised that information contained hereon reflects the company's findings at the time of its intervention only and within the limits of client's instructions, if any, the company's sole responsibility is to its client and this document does not exonerate parties to a transaction from exercising all their rights and obligations under the transaction documents, this document cannot be reproduced except in full, without prior written approval of the company. any unauthorized alteration, forgery or falsification of the content or appearance of this document is unlawful and offenders may be prosecuted to the fullest extent of the law unless otherwise stated the results shown in this test report refer only to the sample(s) tested.



Shenzhen Deesev Testing International Corp.
 深圳市德泽威技术检测有限公司

9th Flr., Building B, Feiyang Science & Technology Park, Longchang Rd. No.8, Bao'an, Shenzhen, Guangdong, China
 中国广东省深圳市宝安区隆昌路8号飞扬科技园B座9楼
 Tel: +86-0755-32936716, E-mail: DTI@deesev.cn

Appendix II

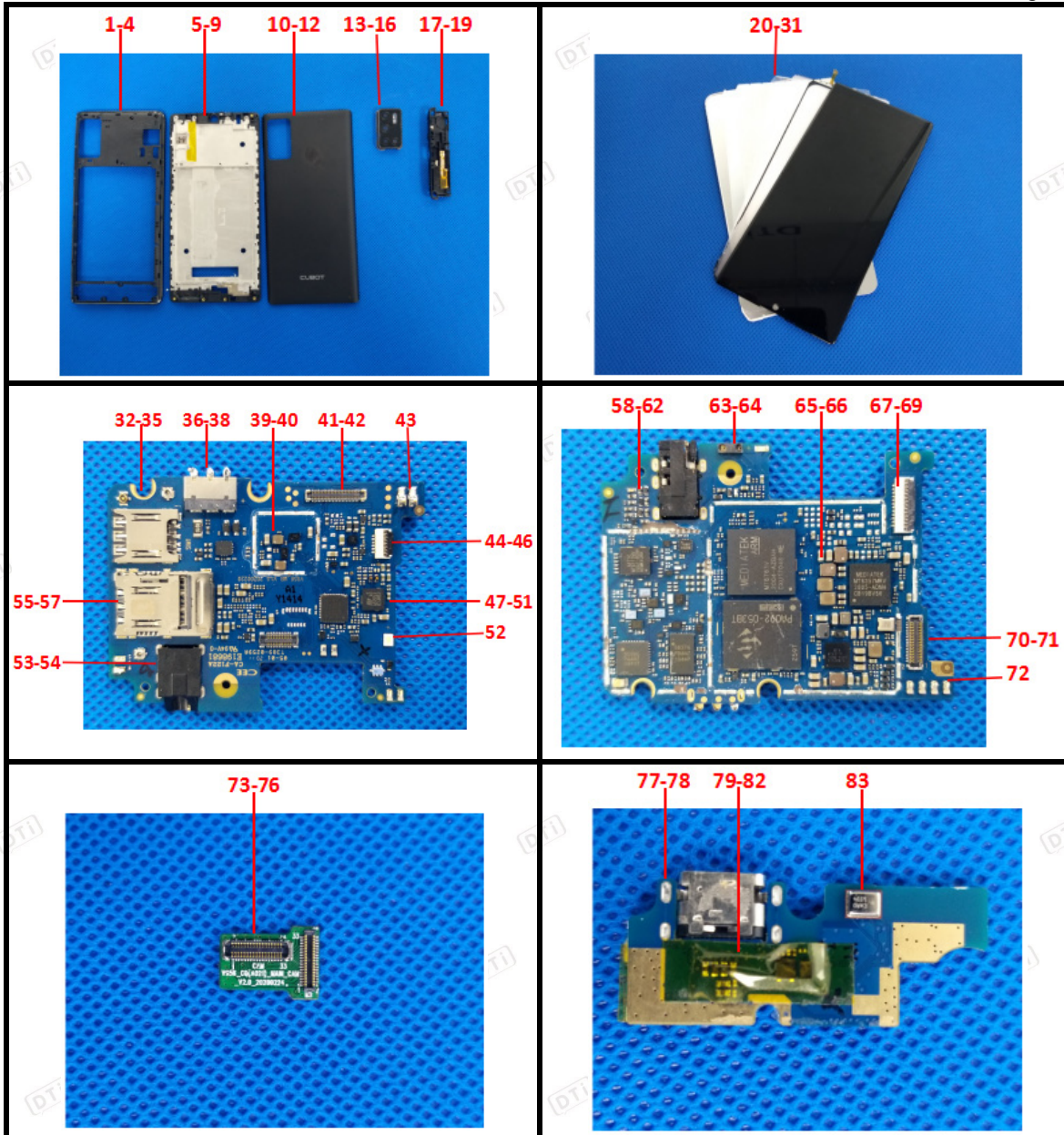
Photograph of Sample





This document is issued by the Company subject to its General Conditions of service of service printed overleaf, available on request for electronic format documents, subject to terms and conditions for electronic documents is drawn to the limitation of liability indemnification and jurisdiction issues defined therein. any holder of this document is advised that information contained hereon reflects the company's findings at the time of its intervention only and within the limits of client's instructions, if any, the company's sole responsibility is to its client and this document does not exonerate parties to a transaction from exercising all their rights and obligations under the transaction documents, this document cannot be reproduced except in full, without prior written approval of the company. any unauthorized alteration, forgery or falsification of the content or appearance of this document is unlawful and offenders may be prosecuted to the fullest extent of the law unless otherwise stated the results shown in this test report refer only to the sample(s) tested.

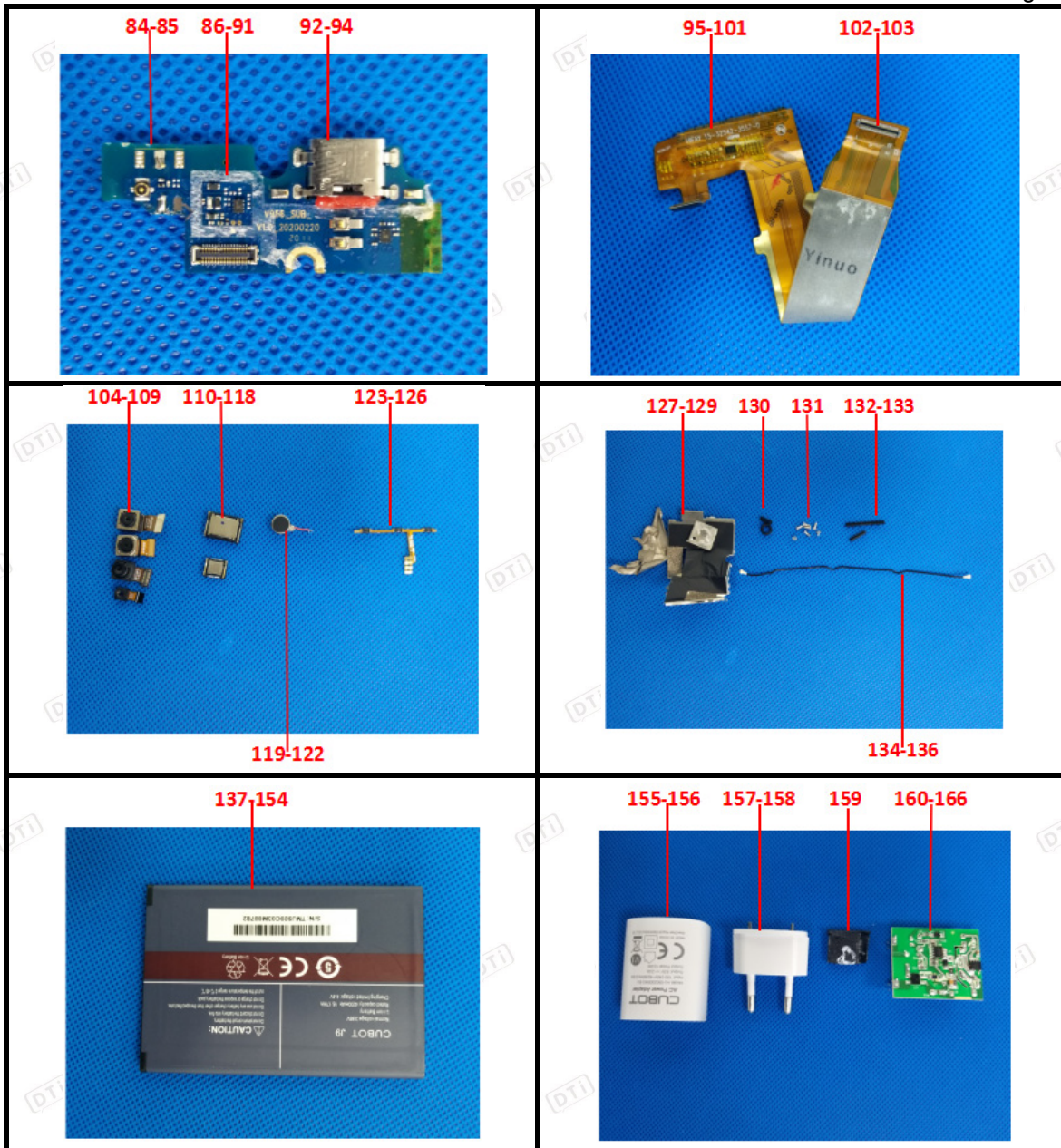






This document is issued by the Company subject to its General Conditions of service of service printed overleaf, available on request for electronic format documents, subject to terms and conditions for electronic documents is drawn to the limitation of liability indemnification and jurisdiction issues defined therein. any holder of this document is advised that information contained hereon reflects the company's findings at the time of its intervention only and within the limits of client's instructions, if any, the company's sole responsibility is to its client and this document does not exonerate parties to a transaction from exercising all their rights and obligations under the transaction documents, this document cannot be reproduced except in full, without prior written approval of the company. any unauthorized alteration, forgery or falsification of the content or appearance of this document is unlawful and offenders may be prosecuted to the fullest extent of the law, unless otherwise stated the results shown in this test report refer only to the sample(s) tested.

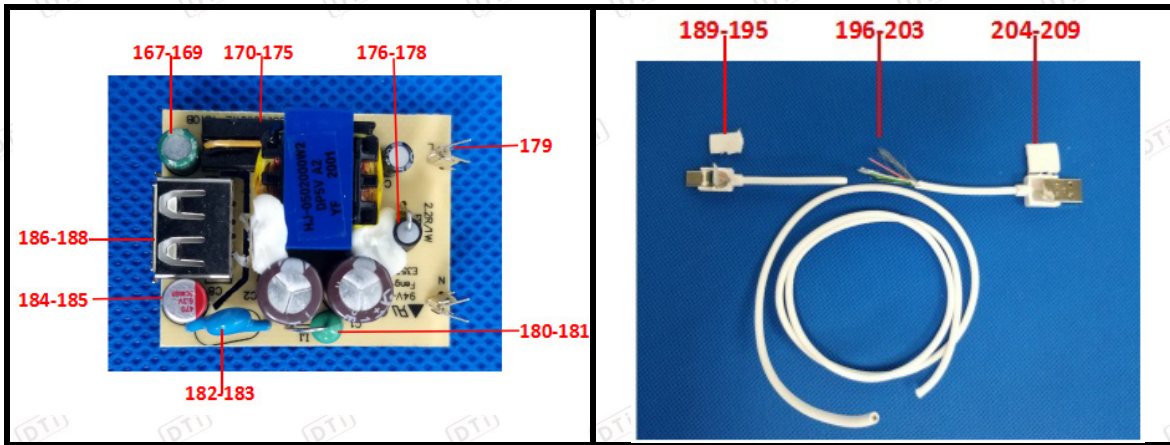






This document is issued by the Company subject to its General Conditions of service of service printed overleaf, available on request for electronic format documents, subject to terms and conditions for electronic documents is drawn to the limitation of liability indemnification and jurisdiction issues defined therein. any holder of this document is advised that information contained herein reflects the company's findings at the time of its intervention only and within the limits of client's instructions, if any, the company's sole responsibility is to its client and this document does not exonerate parties to a transaction from exercising all their rights and obligations under the transaction documents, this document cannot be reproduced except in full, without prior written approval of the company. any unauthorized alteration, forgery or falsification of the content or appearance of this document is unlawful and offenders may be prosecuted to the fullest extent of the law unless otherwise stated the results shown in this test report refer only to the sample(s) tested.





*** End of Report ***



This document is issued by the Company subject to its General Conditions of service of service printed overleaf, available on request for electronic format documents, subject to terms and conditions for electronic documents is drawn to the limitation of liability indemnification and jurisdiction issues defined therein. any holder of this document is advised that information contained hereon reflects the company's findings at the time of its intervention only and within the limits of client's instructions, if any, the company's sole responsibility is to its client and this document does not exonerate parties to a transaction from exercising all their rights and obligations under the transaction documents, this document cannot be reproduced except in full, without prior written approval of the company. any unauthorized alteration, forgery or falsification of the content or appearance of this document is unlawful and offenders may be prosecuted to the fullest extent of the law, unless otherwise stated the results shown in this test report refer only to the sample(s) tested.

